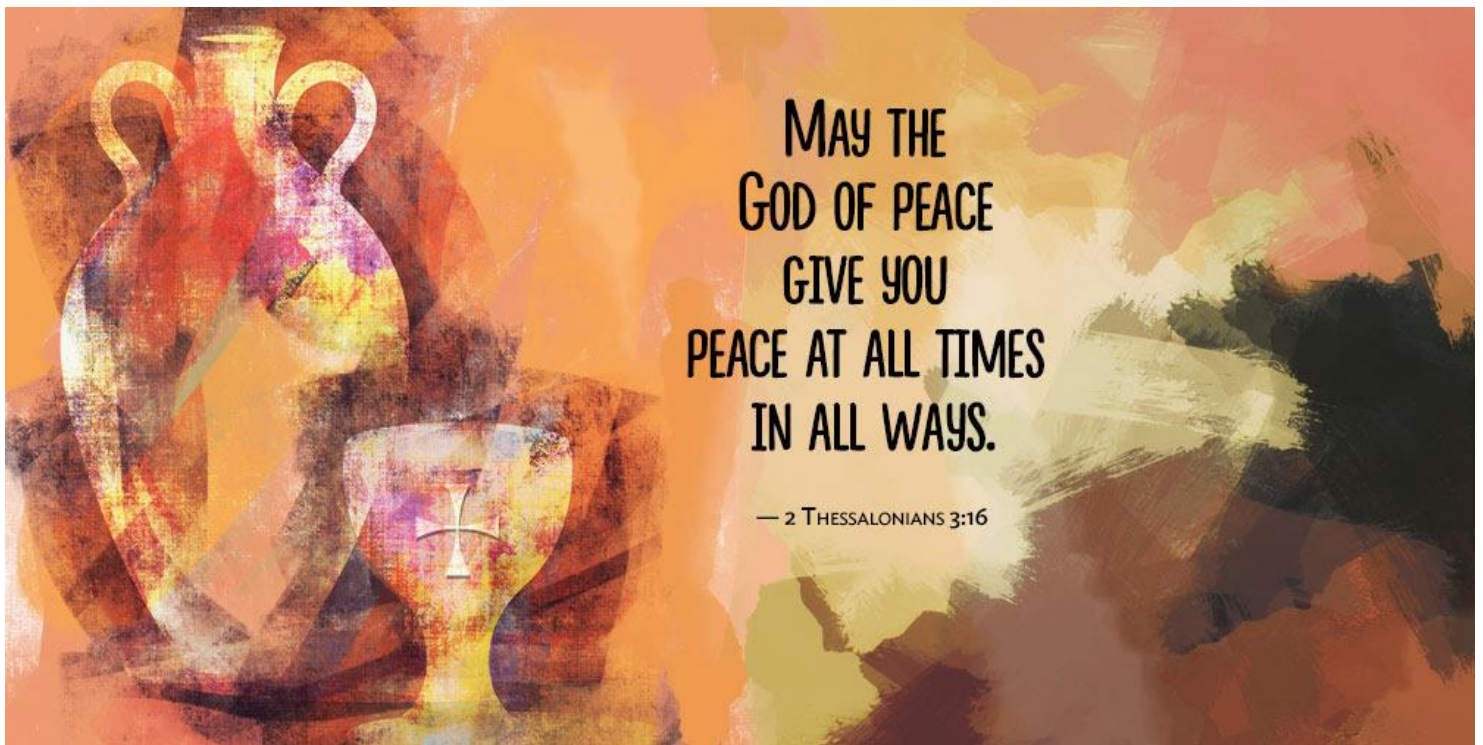


September, 2020

Vol. 20-9

Northwest Presbyterian Church
Monthly Newsletter



CHURCH OFFICE HOURS

Monday - Friday 8:00am - 2:00pm

After Hours Emergency Only: (727) 433-2115 or (727) 748-5160

Pastor Elizabeth Coleman

6330 54th Avenue North, St. Petersburg, FL 33709
(727) 544-4551 * elizabethcoleman49@gmail.com
office6330@gmail.com * Website: nwpchurchfl.com

Pastor's Corner
Northwest Presbyterian Church
Pastor Elizabeth Coleman

“Better Days Ahead!”

It's been an unusual summer. Yet, Northwest Presbyterian Church has held steady in the storm! Because of your faithfulness, the ministries of the church have continued and even expanded! Thank you for continuing to give your tithes and offerings for the work of the church.

In addition to our Food Pantry, our church has become a venue where people can come to receive free prepared meals from Feeding Tampa Bay to help during this economic downturn caused by the pandemic. Thank you to Jim and Paulette Leiby, Mark Cushman, Barb Piwonka, and all of the volunteers who have been sustaining our food distribution programs.

I was happy to hear that the Grief Share program will be resuming, and that the seminar for people who have lost a spouse took place this past week. Barb Piwonka and Charlotte Ogilvie continue to minister hope to those who are grieving. Thank you! May God continue to bless and guide this ministry.

I invite you to participate either by telephone or by computer, laptop or smartphone in our Bible Study on the Gospel of Mark each Wednesday at 11:00 a.m. by Zoom. If you do not have a computer, it is easy to just dial a toll-free number and connect to the Zoom meeting that way. Although you will not see other participants, you can hear and talk with us. We need your voice in the conversation, as we study God's word. Please join us. We will send out a new invitation to the call next week with instructions about how you can connect.

We will finally re-open our sanctuary for worship on Sunday, September 20, 2020. We have carefully planned the details, so that your health will be protected as we worship God together — socially distanced and wearing masks. We will provide masks for those who do not have them, and will use a non-touch thermometer to take the temperature of each person before they enter the church building. Those who have a temperature above 101 degrees will not be permitted to enter the building. We will provide packaged Holy Communion elements that you will pick up from a table before entering the sanctuary. We will omit handshaking and hugging, of course, and will have households to distance themselves from others by at least six feet. After the service, we will exit the sanctuary row by row, directed by an usher, and will continue out of the building. Your continued good health is our intention, as we look forward to resuming worship at church.

Have a blessed rest of the summer!

In Christ's Love,

Pastor Elizabeth

*Pastor Elizabeth and I attended an on-line meeting of the Presbytery of Tampa Bay on August 27th. An exciting new outreach was presented to all churches. The Presbytery felt it was a time for God's people to take action! The Presbytery of Tampa Bay presented **Matthew 25** aiming to put intentional effort into each of these areas. They gave all congregations this Invitation to join in with them.*

- Building congregational vitality by challenging congregations and their members to deepen and energize their faith and grow as joyful leaders and disciples actively engaged with their community, seeing new disciples engaged in ministry and longstanding believers develop in faith as the gospel of Jesus Christ is shared in word and deed.
- Dismantling structural racism by fearlessly applying our faith to advocate and break down the systems, practices and thinking that underlie discrimination, bias, prejudice and oppression of people of color.
- Eradicating systemic poverty by acting on our beliefs and working to change laws, policies, plans and structures in our society that perpetuate economic exploitation of people who are poor. (6/11/2020)

A 3-minute introduction to Matthew 25 as well as many other resources, can be found at
<https://www.presbyterianmission.org/ministries/matthew-25/>

There is added information from the Presbytery website. I urge you to check it out.

Paulette

Matthew 25 in the PC(USA):
A bold vision and invitation
Actively engaged in the world

What is a Matthew 25 church?

Matthew 25:31– 46 calls all of us to actively engage in the world around us, so our faith comes alive and we wake up to new possibilities. Convicted by this passage, both the 222nd and 223rd General Assemblies (2016 and 2018) exhorted the PC(USA) to act boldly and compassionately to serve people who are hungry, oppressed, imprisoned or poor.

How the vision unites all Presbyterians

By accepting the Matthew 25 invitation, you can help our denomination become a more relevant presence in the world. We recognize Christ's urgent call to be a church of action, where God's love, justice and mercy shine forth and are contagious. And we rejoice how our re-energized faith can unite all Presbyterians for a common and holy purpose: our common identity to do mission.



Members of Northminster Presbyterian Church in Indianapolis get ready to clean up their community

About the Matthew 25 mark



The circular shape represents unity and equality. Like God, a circle has no beginning and no end, and it symbolizes our continuing effort to help one another. The shape also suggests a globe that points to our engagement with the world.

The three interlocking figures represent the equality of all people without gender or race bias. They have their arms around each other, symbolizing friendship, protection and service. The number three suggests the three focus areas of congregational vitality, structural racism and systemic poverty, as well as the Trinity.

The color palette is bright, lively, friendly and energetic — suggestive of our active commitment.

Finally, the legend “Matthew 25” below the symbol is the literal identification of the mark. We use a handwritten font to make the point that active engagement in the world requires human effort.

Trinity
C A F E

A Program of
FEEDING
Tampa Bay

Trinity Café (Feeding Tampa Bay) has finally obtained a ‘Start Work’ permit for the renovations of our church hall. This permit allows them to begin with the outside construction. A sidewalk extending from the front parking lot to the back door of the hall has been started.



Thanks for your prayers! Now let's watch for more progress as the Café becomes a reality!

Betsy's Blessings

GOD'S LOVE

We will finally be celebrating the marriage of my daughter Kellie and her husband, Stephen. One of the things that we will be putting up at the end of the aisles is the verses about love from 1st Corinthians 13. As I read these again I was reminded that even though we often quote these at weddings, what they are talking about is how God loves. His love is perfect and divine. We can know His love as we grow in knowing Him. And as we abide in His love and walk in the power of His Spirit, we can love the way He does.

So as you read these familiar verses think about how much God loves you, how He sees you and takes great delight in you, and let His love fill you and overflow to those around you.

“Love is patient, love is kind.

It does not envy, it does not boast, it is not proud.

It is not rude, it is not self-seeking,

it is not easily angered, it keeps no record of wrongs.

Love does not delight in evil but rejoices with the truth.

It always protects, always trusts, always hopes, always perseveres.

Love never fails.”

1 Corinthians 13:4-8a, NIV

May the love of God given to us by the sacrifice of Christ strengthen us and fill us so that we can love others with the love He has so generously poured out on us.

God bless you my brothers and sisters in Christ,

Betsy O'Callaghan





Nancy Zarich, Claire Brulatour, Ruth Brennan, Dorothy Davis, Sally Ross, Richard Bohle, Tina Lundgren, Roberta Koning and Judy Churchman.

Please notify the church business office or Sue Parrish or Pam Fonte if you would like to add someone to our homebound or to join the Congregational Care Team that visits our homebound.



Requests for prayers may be called in to **Barb Piwonka** at (727) 545-5976. If you are interested in joining the Prayer Chain, please contact Shirley at the above telephone number. You may also post prayer requests on NWP Facebook Page or contact the office and ask that your request be published in the weekly announcement or the monthly newsletter.

Also, at the end of every Sunday service, there is a time when you can ask for prayers from the congregation.

It is proven...Prayer Works!



Our Food Pantry is still operating as a drive-thru every Wednesday morning from 9am until Noon. In the last 2 weeks we have served 90 people. God is Good all the time.



A new and updated **Church Directory** is in the works. Times like these have shown us how important it is to be able to stay in touch with one another.

To that end, please take a moment to carefully check your information in the current directory. If there are any changes that need to be made, please contact Kris Parks at 727 544-4551.



17 Janet Paarlberg
22 Mike Burkowski



The Sapphire

Traditionally a favorite stone of priests and kings, the sapphire symbolizes purity and wisdom.

Announcement

Northwest Presbyterian Church will re-open on Sunday, September 20, 2020 with a socially-distanced Holy Communion Service at 10:30a.m. in our sanctuary. A Sealed Pre Filled Communion Cup with Wafer can be picked up from a table near the entrance of the sanctuary.

All CDC-advised precautions for churches will be in place to assure your continued good health. Face masks are required and will be provided.



Grief Share Weekly Support Group will meet by ZOOM starting Monday, August 31st

Anyone who is grieving the loss of a loved one is welcome to join our group on Mondays from 4:00 to 5:30 pm beginning Aug. 31st. We will skip Labor Day, but we will meet every week after that for a total of 13 sessions. We will not be meeting in person at the church because of COVID-19. You may register at GriefShare.org and click on Find A Group and Northwest Church will be one of the choices. After you fill in your information, you will be contacted by email so that you can learn how to join our meetings.

Anyone in the church or community is welcome to attend; we want to help you on your journey of grief, whether you have lost a parent, a child, a spouse or a dear friend. Co-facilitators are Charlotte Ogilvie and Barb Piwonka (727-545-5976). There is a one-time cost of \$15 for the workbook that accompanies the videos that are viewed each week.



A Special Memory



PRAYER REQUESTS

Northwest Church Prayer Chain prayed for these needs:

- Aug. 3 from Paulette Leiby for Shawn and Mayo Correctional
from Charlotte Ogilvie for Terry Capes and family
- Aug. 4 from Charlotte for nephew Joshua and family
- Aug. 6 from Pam Smith for her family member Conndalora
- Aug. 9 from Shirley Wildes for Sue Parrish's daughter and her husband, Mary
and Derek
- Aug. 14 from Barb Piwonka for friend Jan's stepdaughter Diane
- Aug. 15 from Shirely Wildes for her daughter Sue Parrish
- Aug. 16 from Pam Smith for her granddaughter's mother-in-law, Kay Patton
from Kris Parks for her husband Jim
- Aug. 17 update from Paulette Leiby regarding her friend Karen
from Paulette for the family and friends of Charlene
from Paulette for her son Shawn
- Aug. 20 from Barb Piwonka for the Loss of Spouse Seminar and for GriefShare
meetings
from Paulette Leiby for Maria Young and family
Praise report from Paulette regarding Shawn
- Aug. 24 from Paulette regarding Maria Young
from Shirley Wildes for herself

We are thankful for God's listening ear and for His tender mercies. What a friend we have in Jesus!

If you have a request you would like us to pray for, please call Barb at 727-545-5976.



Paige celebrated her first birthday!

She's the granddaughter of Jill Cole, and she's very close to learning to walk.

Praise God for helping her through surgery and wearing casts, her hips are getting better. Thanks for your prayers.

(From Barb Piwonka)

SCHOOL'S OPEN

Drive Carefully

Fall Word Search

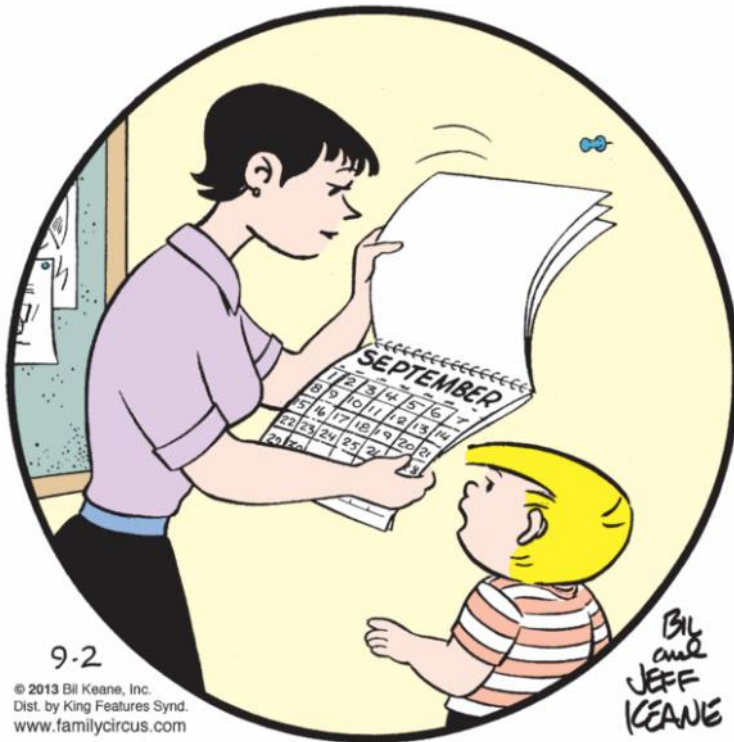


ACORN
APPLE
AUTUMN
CHESTNUTS
CHILLY
CIDER
COBWEB
FALL
FOOTBALL
GOURD

HALLOWEEN
HARVEST
HAY BALE
HAYRIDE
LEAVES
MAIZE
NOVEMBER
NUTS
OCTOBER
PUMPKIN

QUILT
RAKE
SCARECROW
SEPTEMBER
SLEET
THANKSGIVING





9-2

© 2013 Bill Keane, Inc.
Dist. by King Features Synd.
www.familycircus.com

Bill
and
JEFF
KEANE

"Oh, no! It can't be! You must have skipped a page!"



1-25

© 2013 Bill Keane, Inc.
Dist. by King Features Synd.
www.familycircus.com

Bill
and
JEFF
KEANE

"Mommy, I'm not ready to do my homework yet. I've still got my brain in sleep mode."



By Bill Keane



© 2013 Bill Keane, Inc. Dist. by King Features Synd.

www.familycircus.com

9-4



Bill
and
JEFF
KEANE

September 2020

Sun

Mon

Tue

Wed

Thu

Fri

Sat

	Grief Share Begins 4-6pm	1	2	3	4	5
6	7 Labor Day	8 Session Meeting 7pm	9	10	11	12
13	14	15	16	17	18	19
20 Communion Service 10:30am	21	22	23	24	25	26
27	28	29	30			